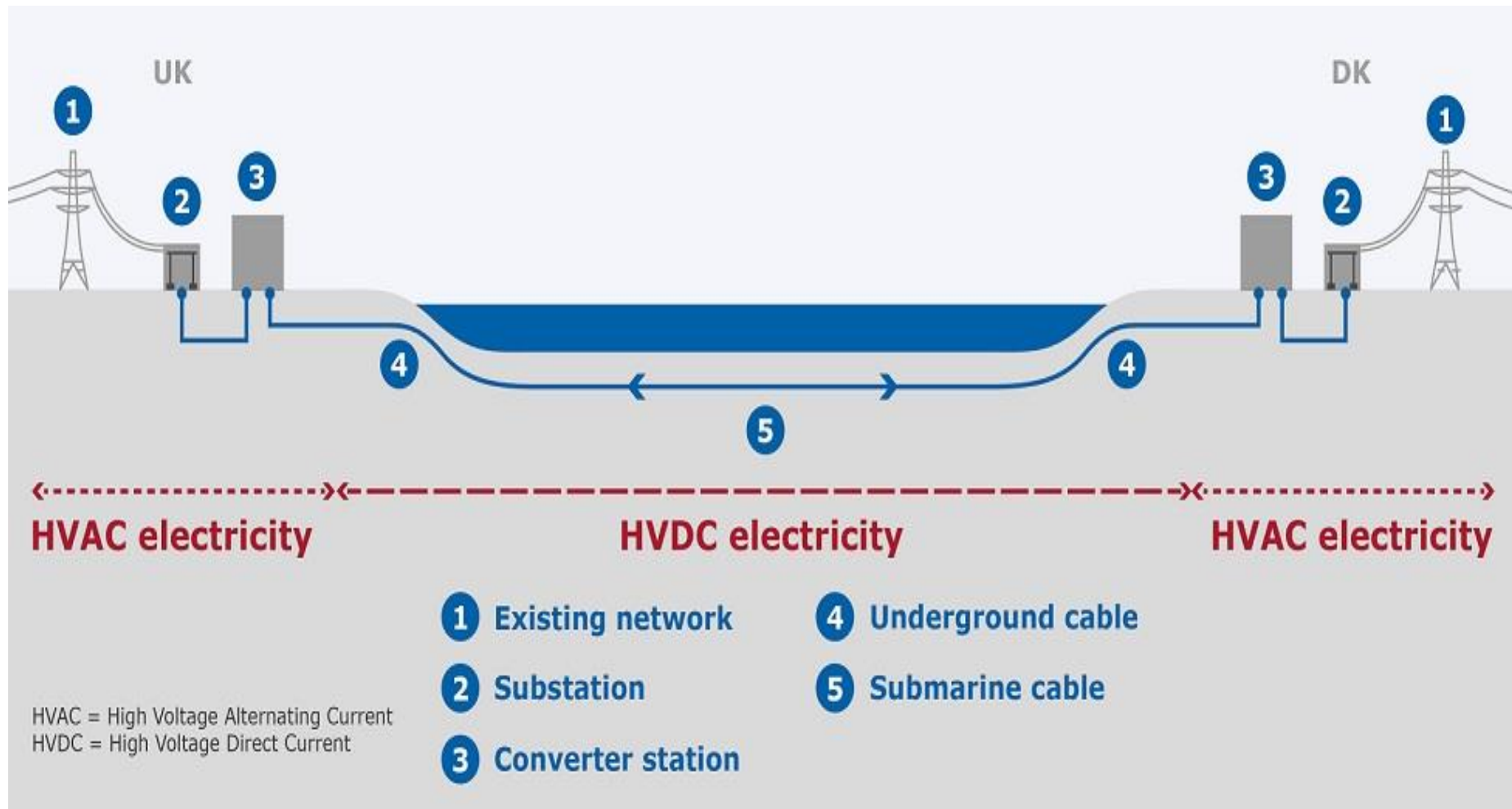
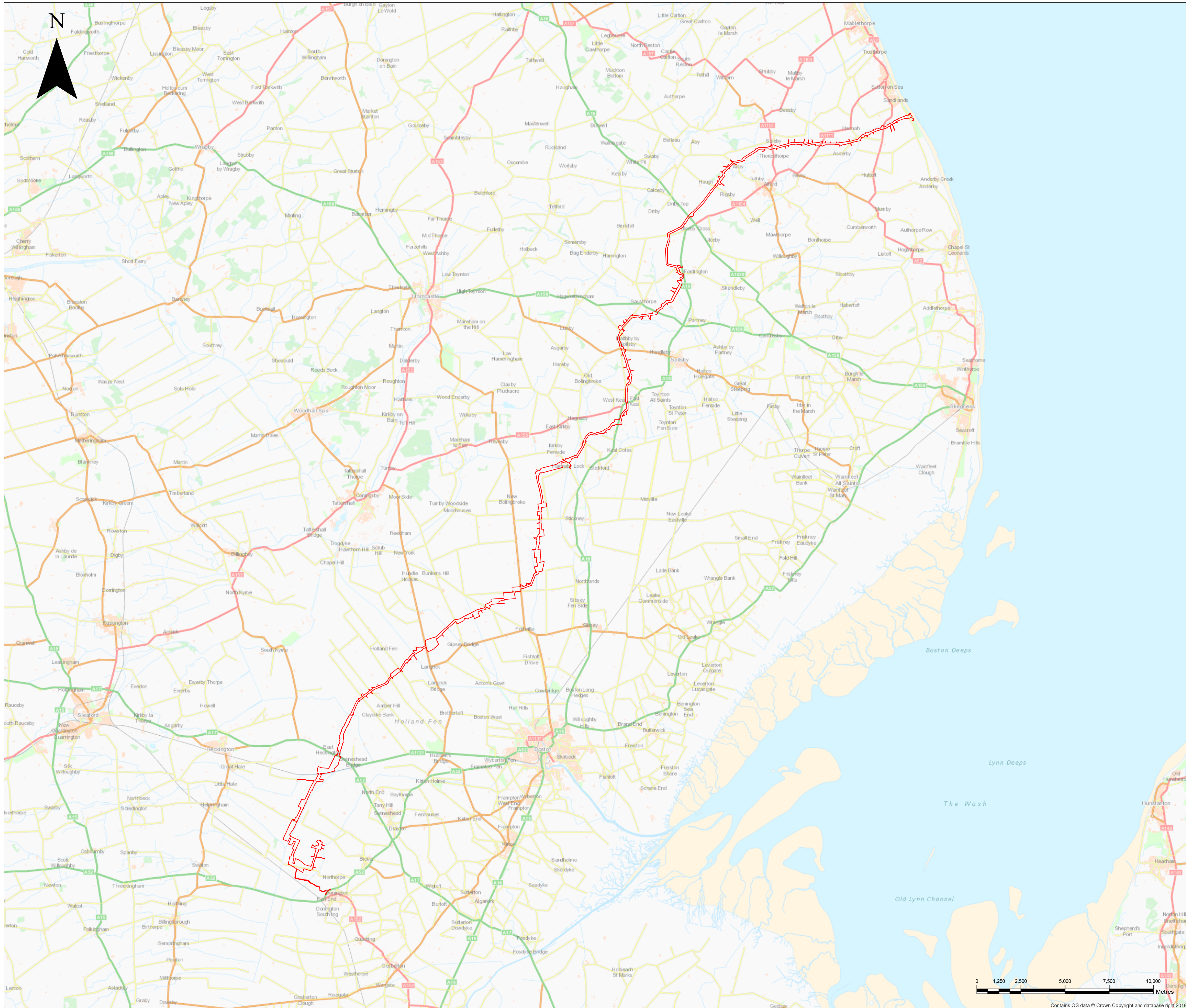


**The National Grid Viking Link Limited
(Viking Link Interconnector) Compulsory
Purchase Order 2019**

Appendix 1 of the Statement of Reasons





NATIONAL GRID VIKING LINK LIMITED
(VIKING LINK INTERCONNECTOR)
COMPULSORY PURCHASE ORDER 2019

OVERVIEW PLAN

KEY
 Order Land Boundary

NOTES
 1. All dimensions in metres

Crown copyright and database rights 2016 OS 100031673.
 You are permitted to use this data solely to enable you to respond to, or interact with, the organisation that provided you with the data.
 You are not permitted to copy, sub-licence, distribute or sell any of this data to third parties in any form.



Compulsory Purchase Order
 DRAWING TITLE
 National Grid Viking Link Limited (Viking Link Interconnector) Compulsory Purchase Order 2019
 Overview Plan

SITE		PRINT
DRAWING NUMBER		FORMAT
REV. REMARKS		SCALE
AUTHOR/CHKD/APPD		SHT No. of SHTS
DATE		0
1:100,000		



Contains OS data © Crown Copyright and database right 2018

DC Joint Bay to connect two sections of cable together

Fig. 3, During Installation

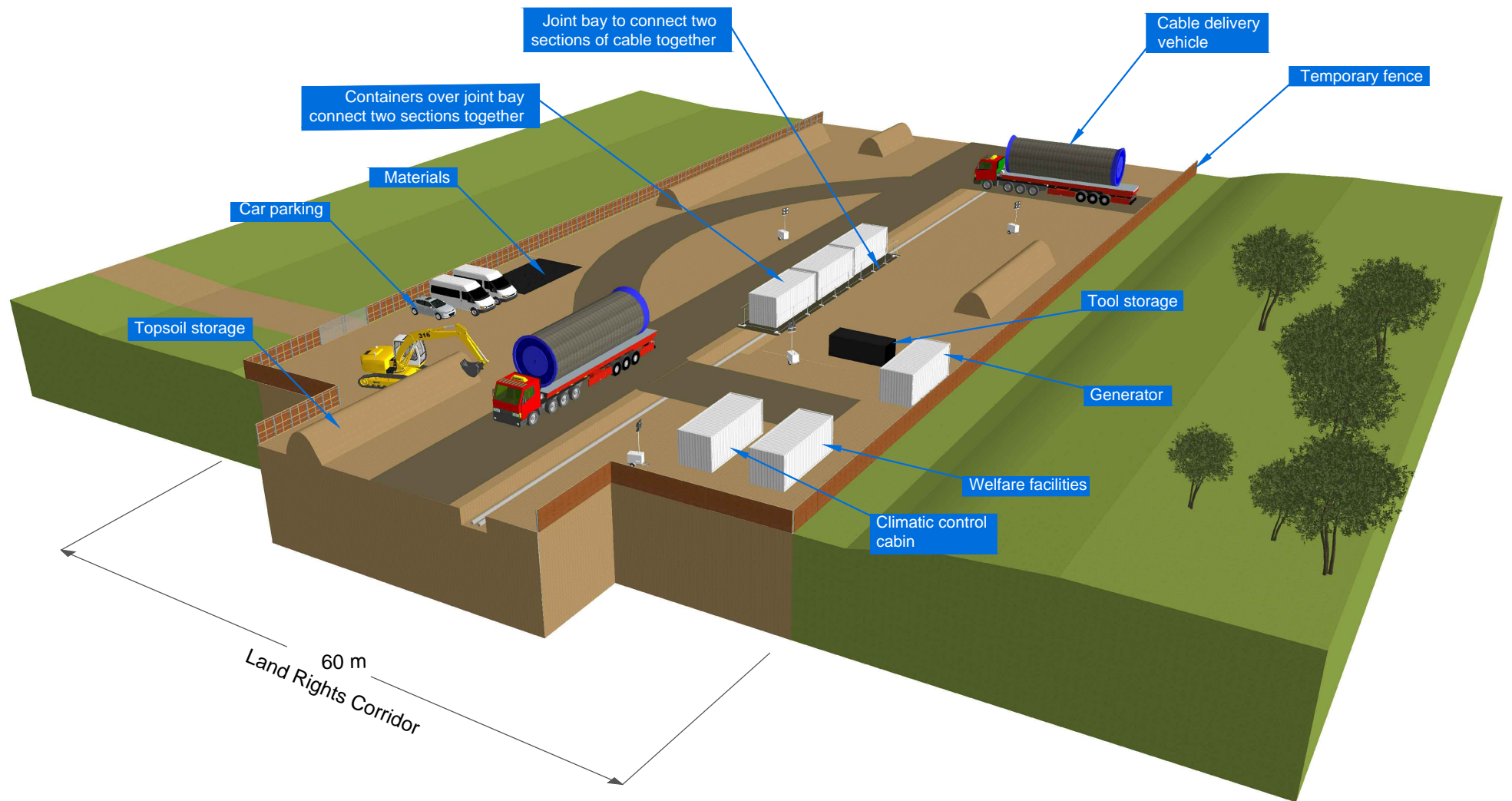
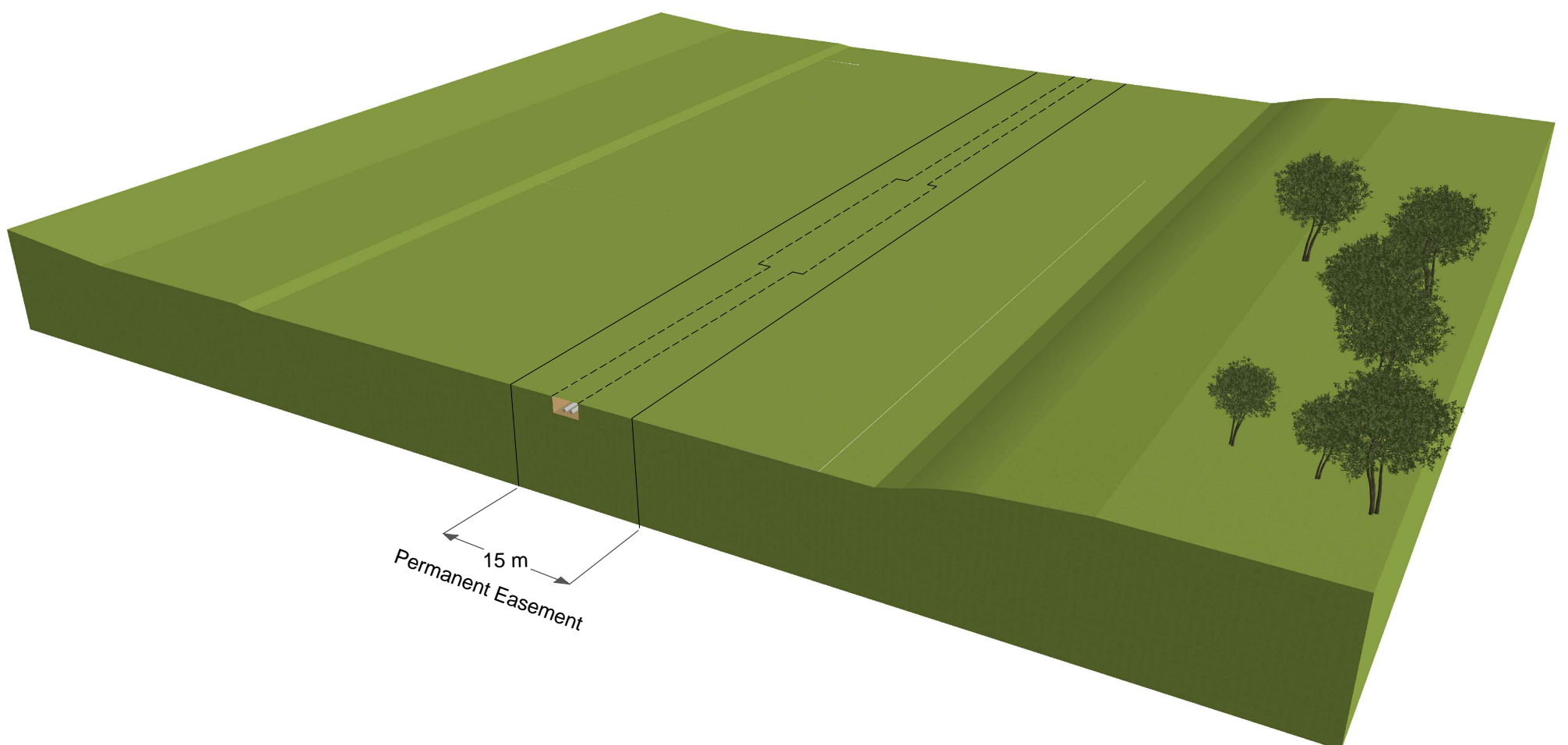


Fig. 4, Post Installation



DC Route - Typical 60m Lands Right Corridor

Fig. 1, During Installation

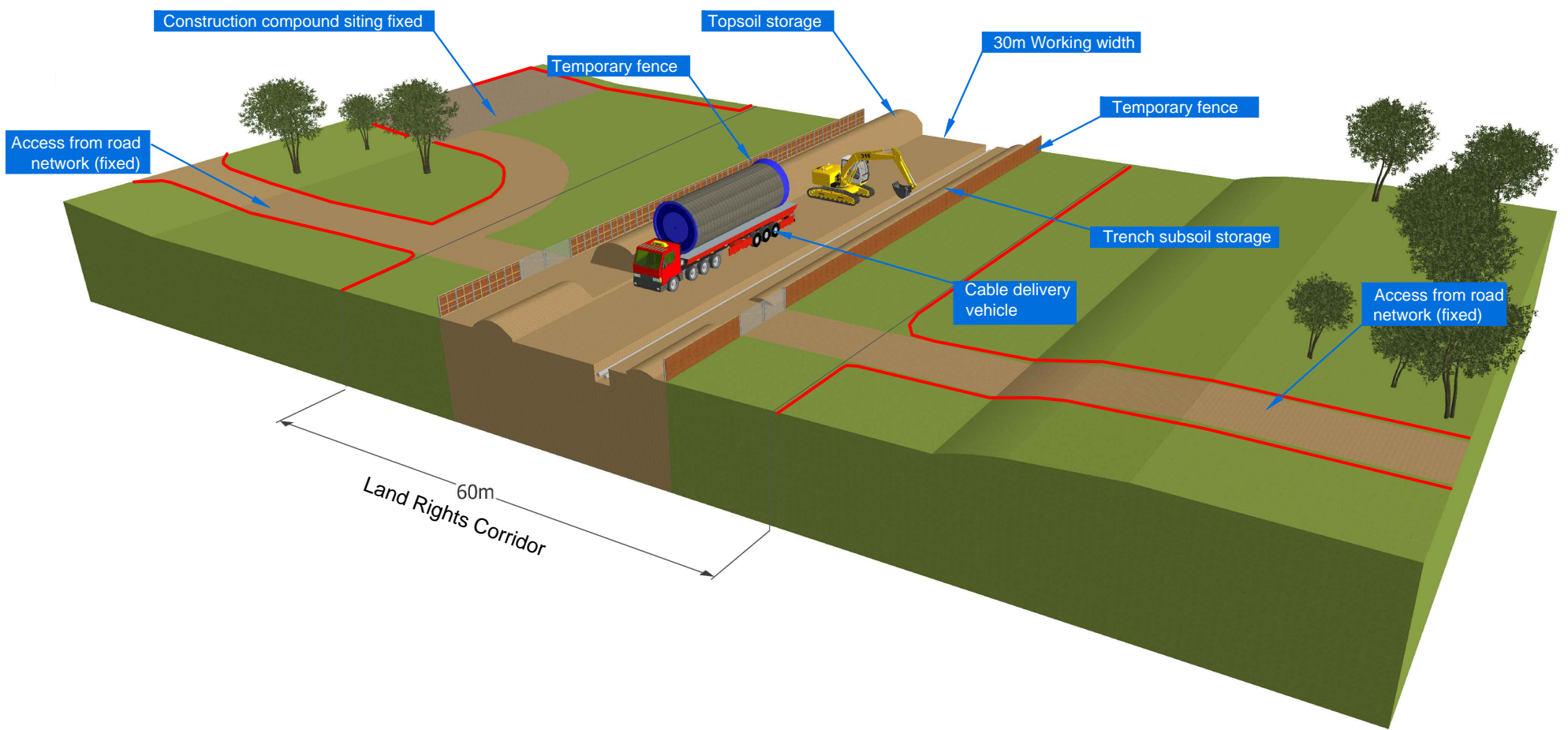
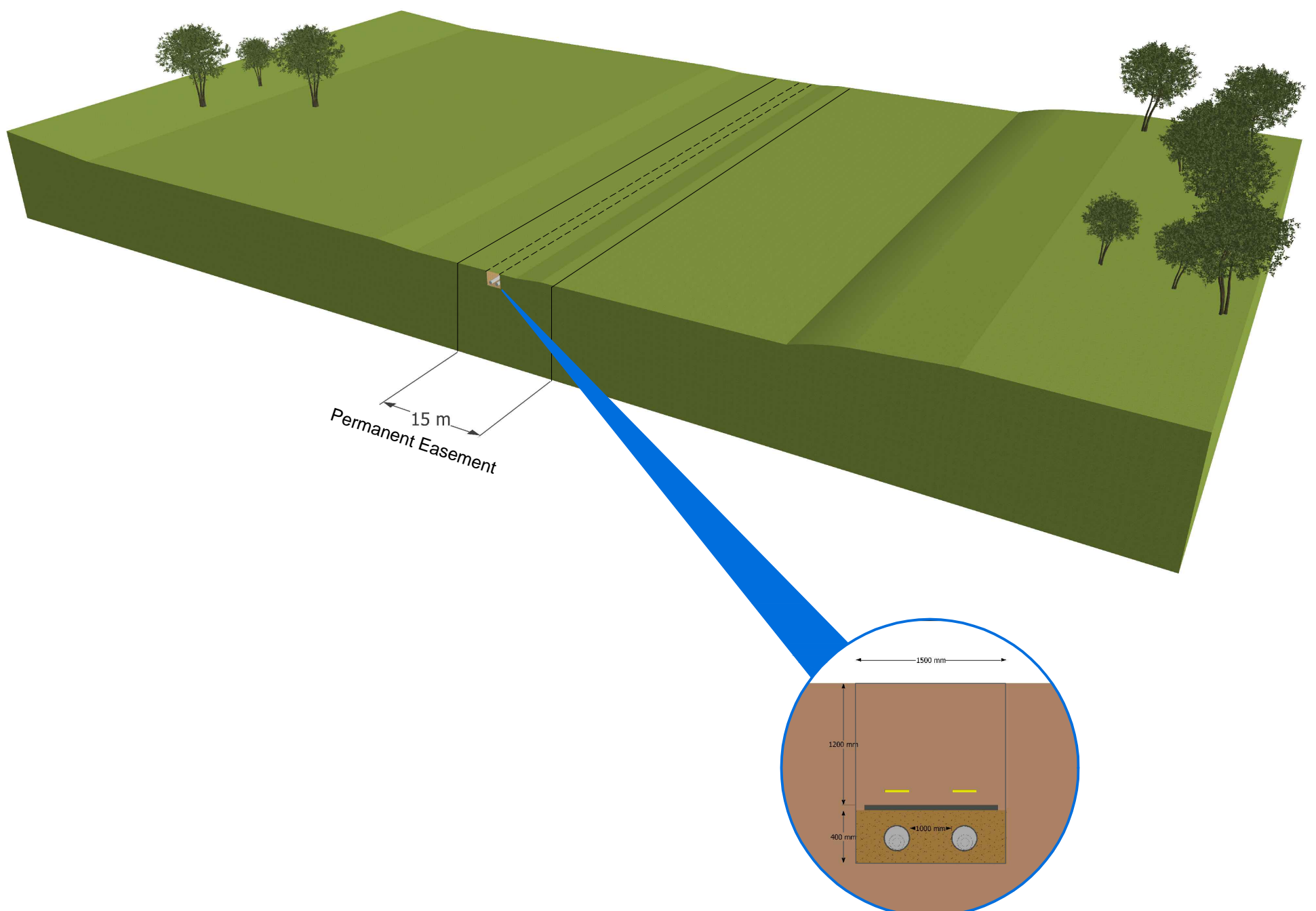


Fig. 2, Post Installation



Typical Crossing Watercourse

Fig. 5, During Installation

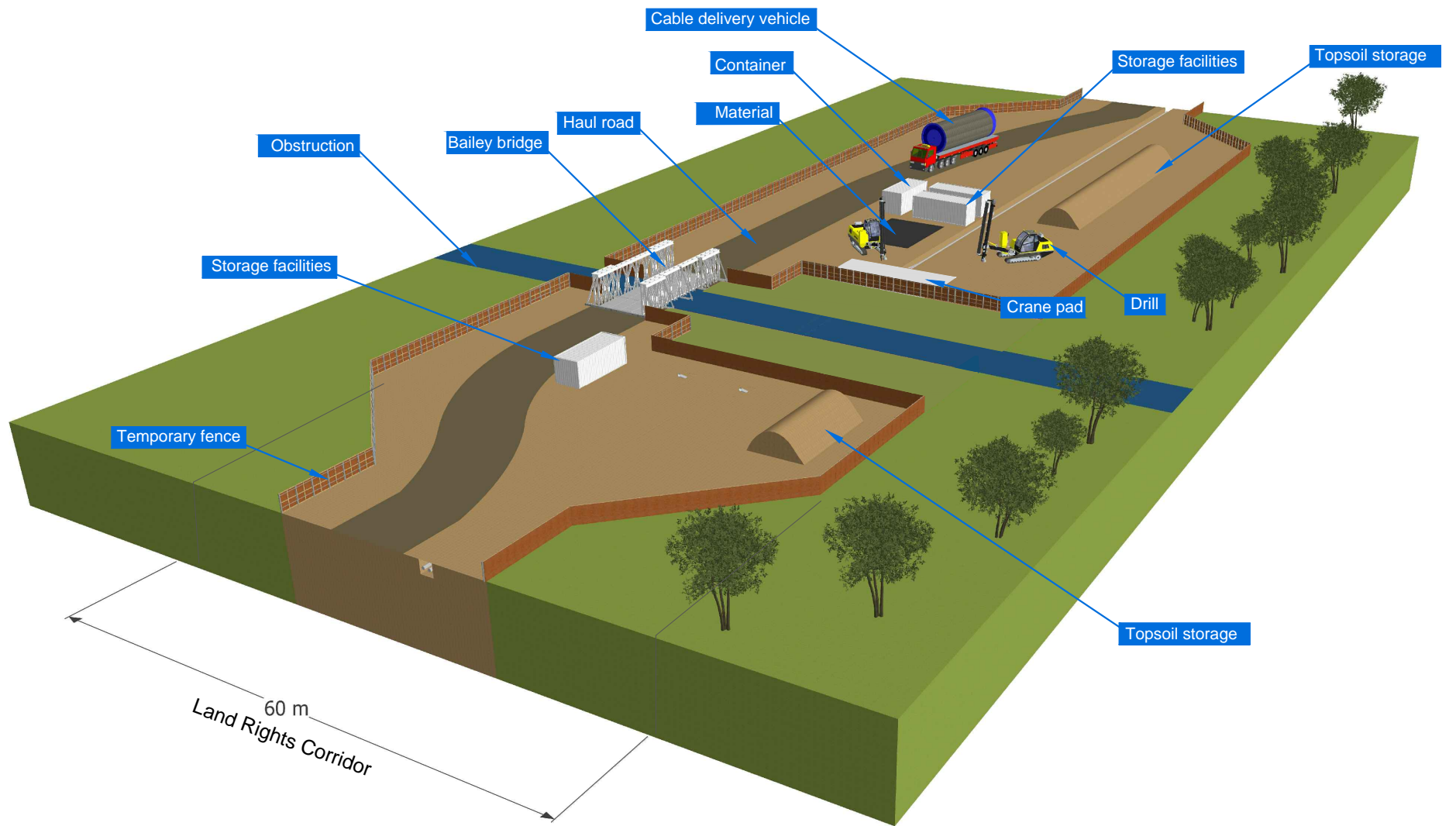
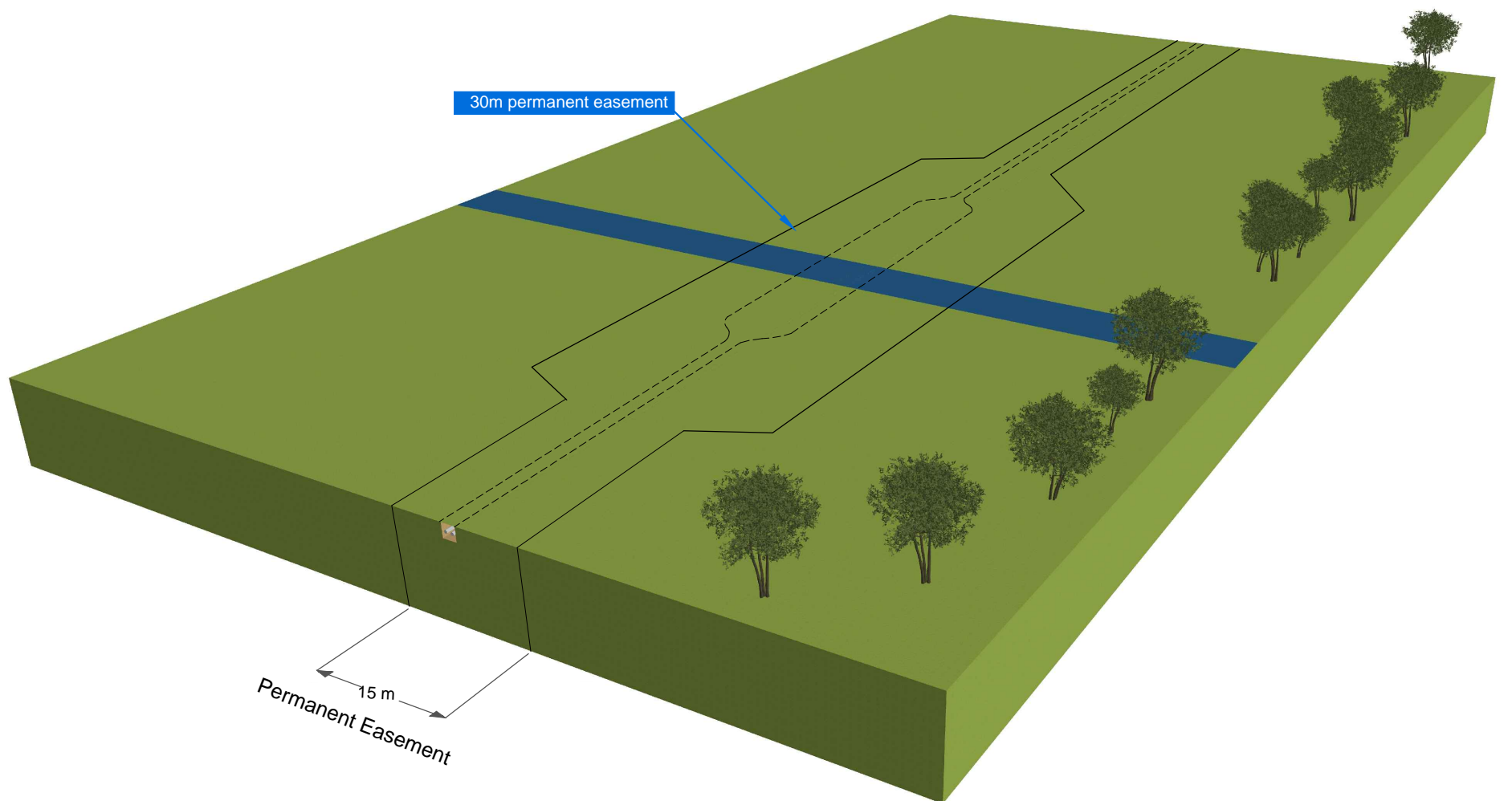
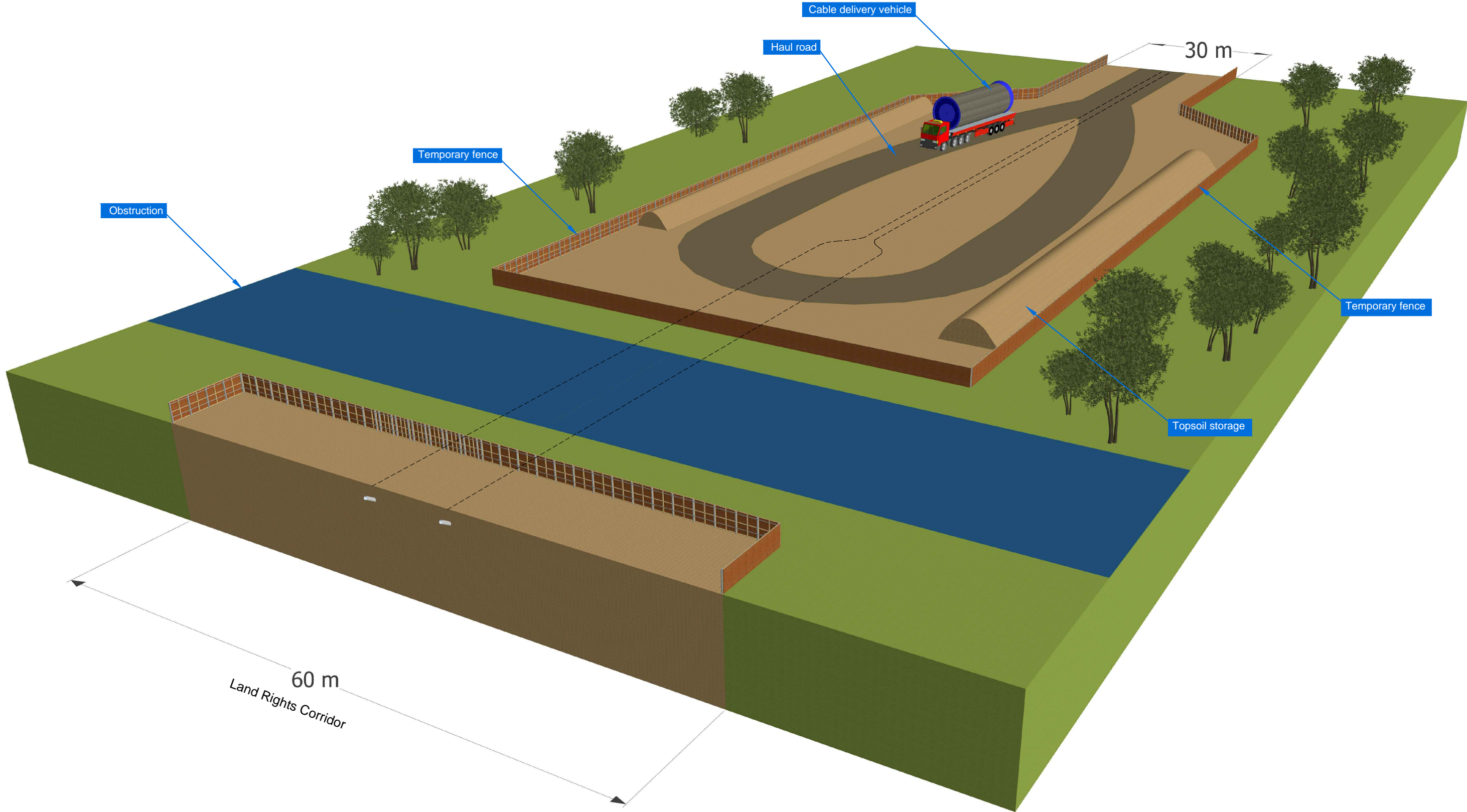


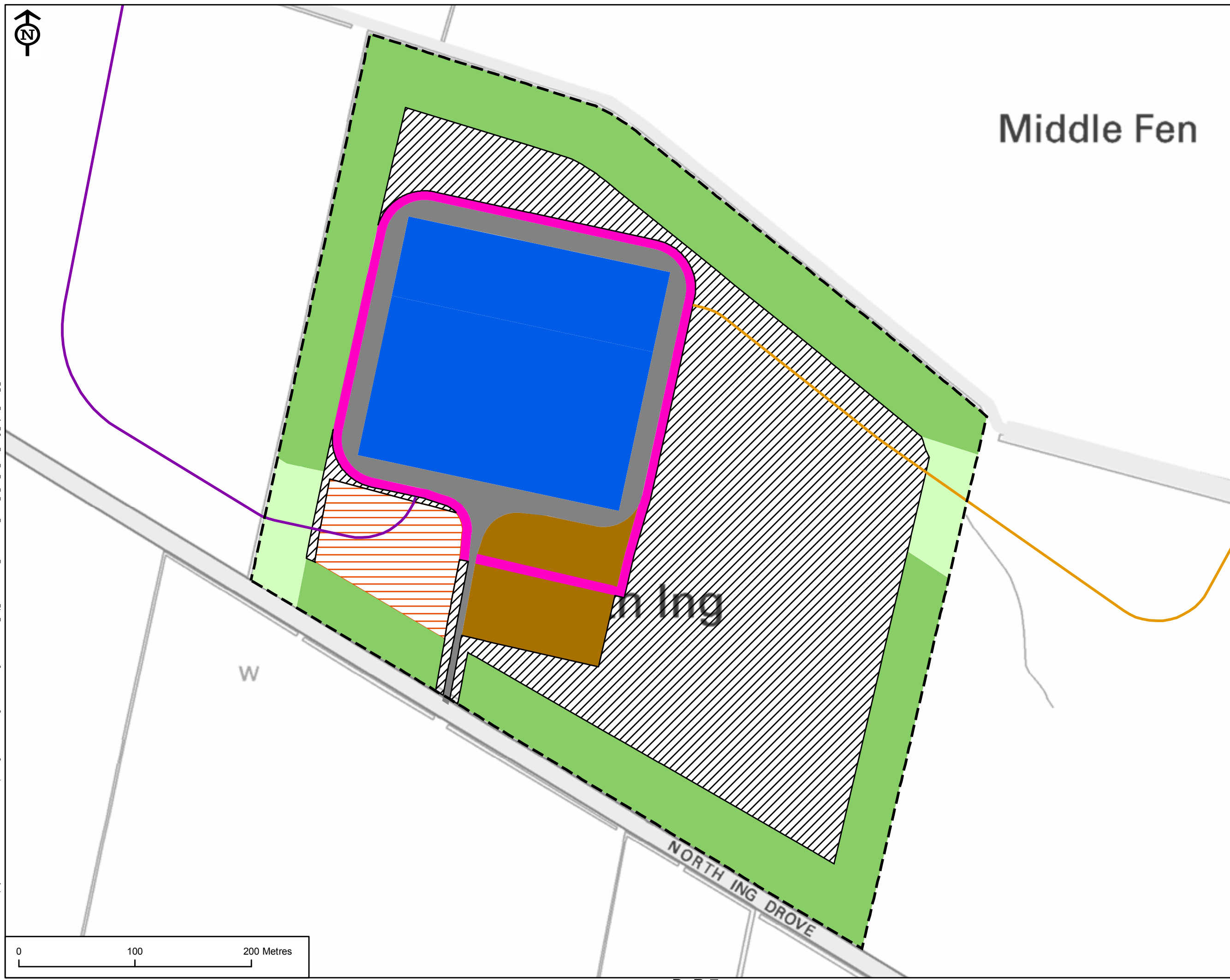
Fig. 6, Post Installation



Typical Dead End Turn

Fig. 7





- LEGEND**
- Proposed Converter Station Site
 - Indicative AC Cable Alignment
 - Indicative DC Cable Alignment
 - Converter buildings and equipment
 - Attenuation zone
 - Reinstated zone
 - Additional hardstanding zone
 - Landscape planting zone
 - Landscape - Cable entry and exit points
 - Perimeter road zone
 - Security zone



REVISION:

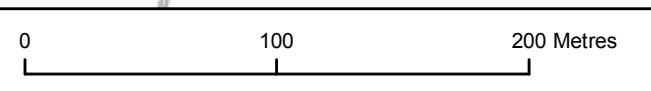
REV.	DATE	DESCRIPTION
1	17/07/18	ORIGINAL ISSUE
1	22/08/18	AMENDED LEGEND

FIGURE NO.
VL_180822_SI_P87

FIGURE TITLE
PROPOSED CONVERTER STATION:
BASE DESIGN LAYOUT

SHEET NUMBER
1 of 1

NOTES



This drawing has been prepared for the use of AECOM's client. It may not be used, modified, reproduced or relied upon by third parties, except as agreed by AECOM or as required by law. AECOM accepts no responsibility, and denies any liability whatsoever, to any party that uses or relies on this drawing without AECOM's express written consent. Do not scale this document. All measurements must be obtained from the stated dimensions.

AC Joint Bay to connect two sections of cable together

Fig. 12, During Installation

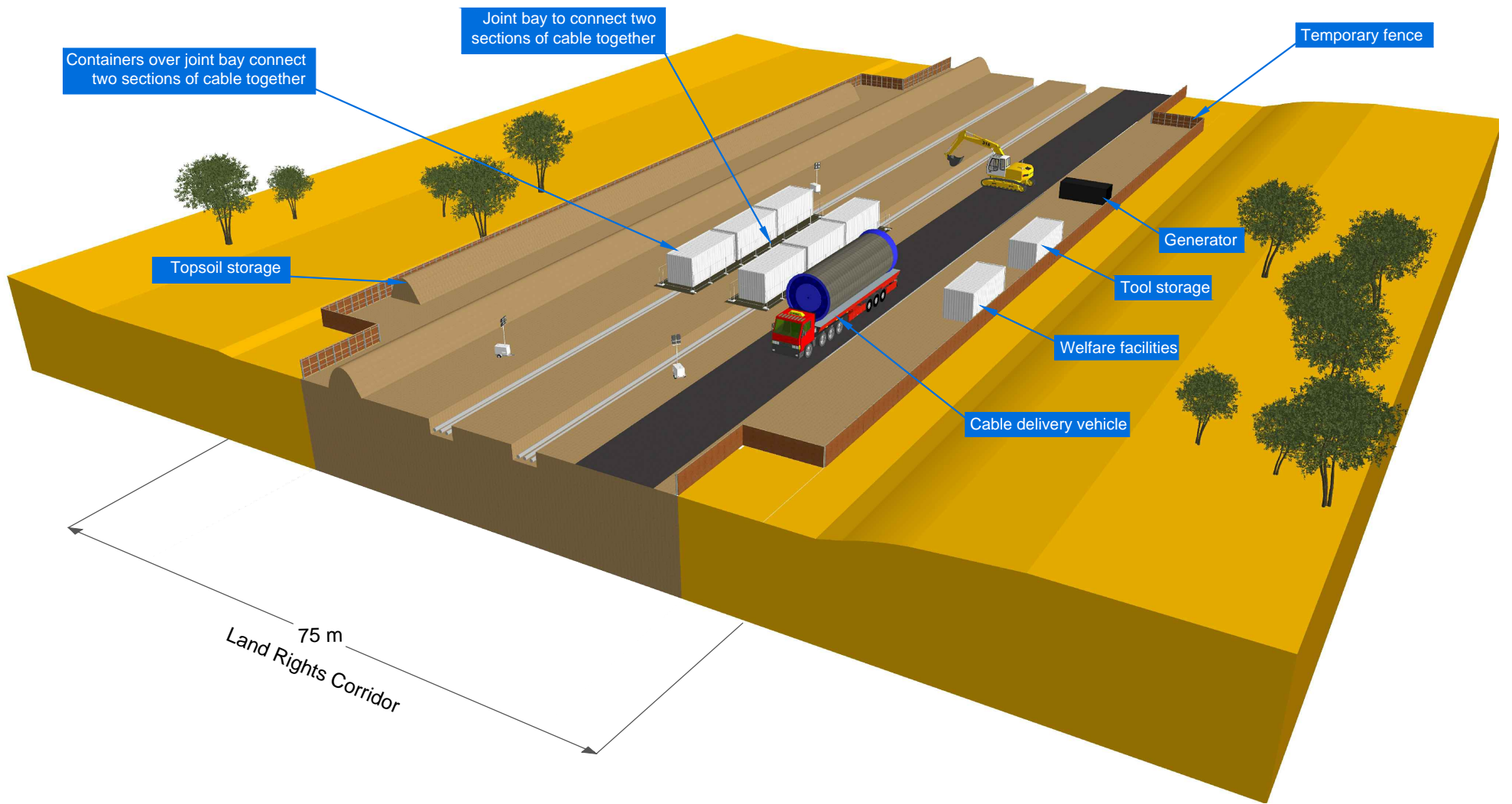
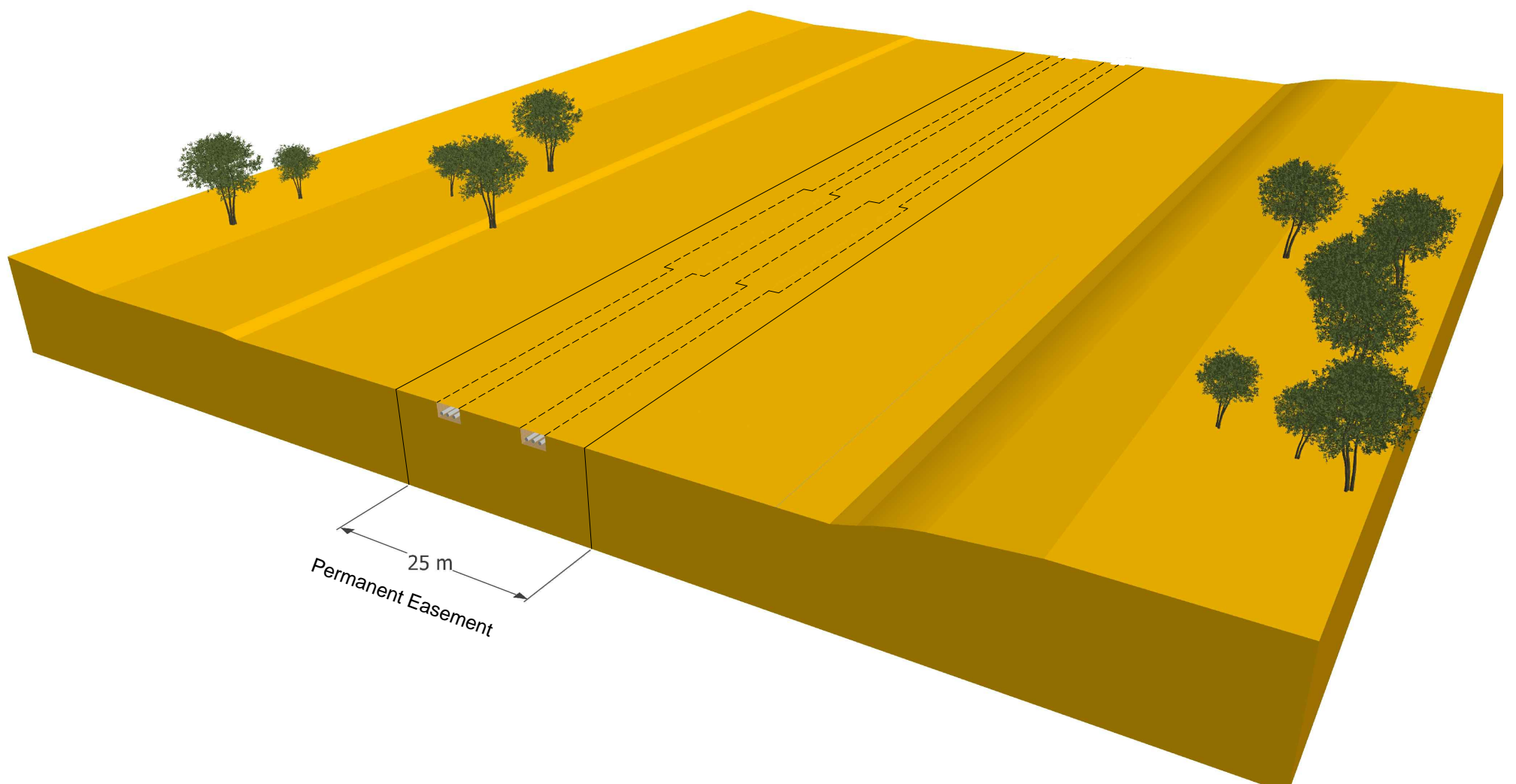


Fig. 13, Post Installation



Flat Formation AC Route 75m Lands Right Corridor

Fig. 10, During Installation

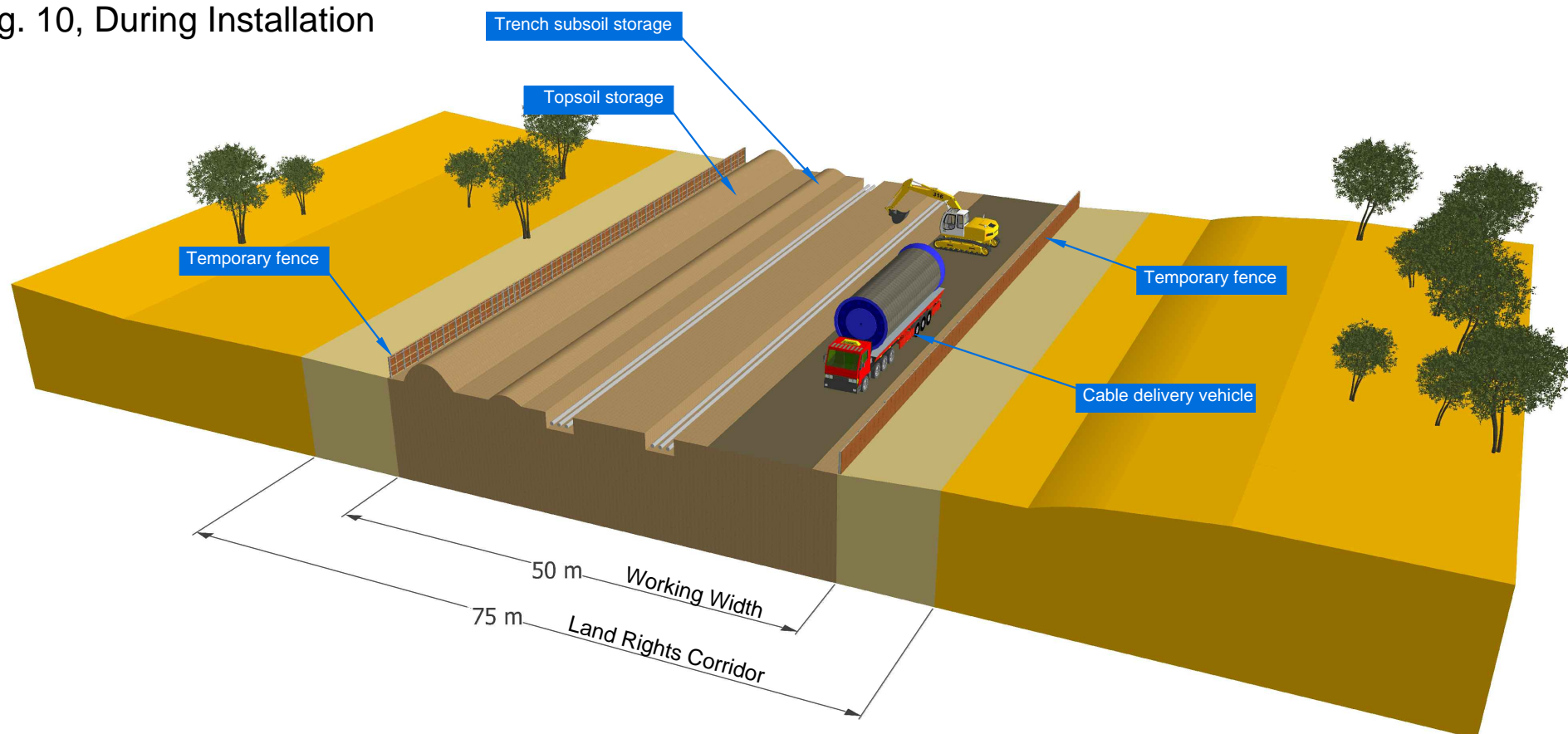


Fig. 11, Post Installation

