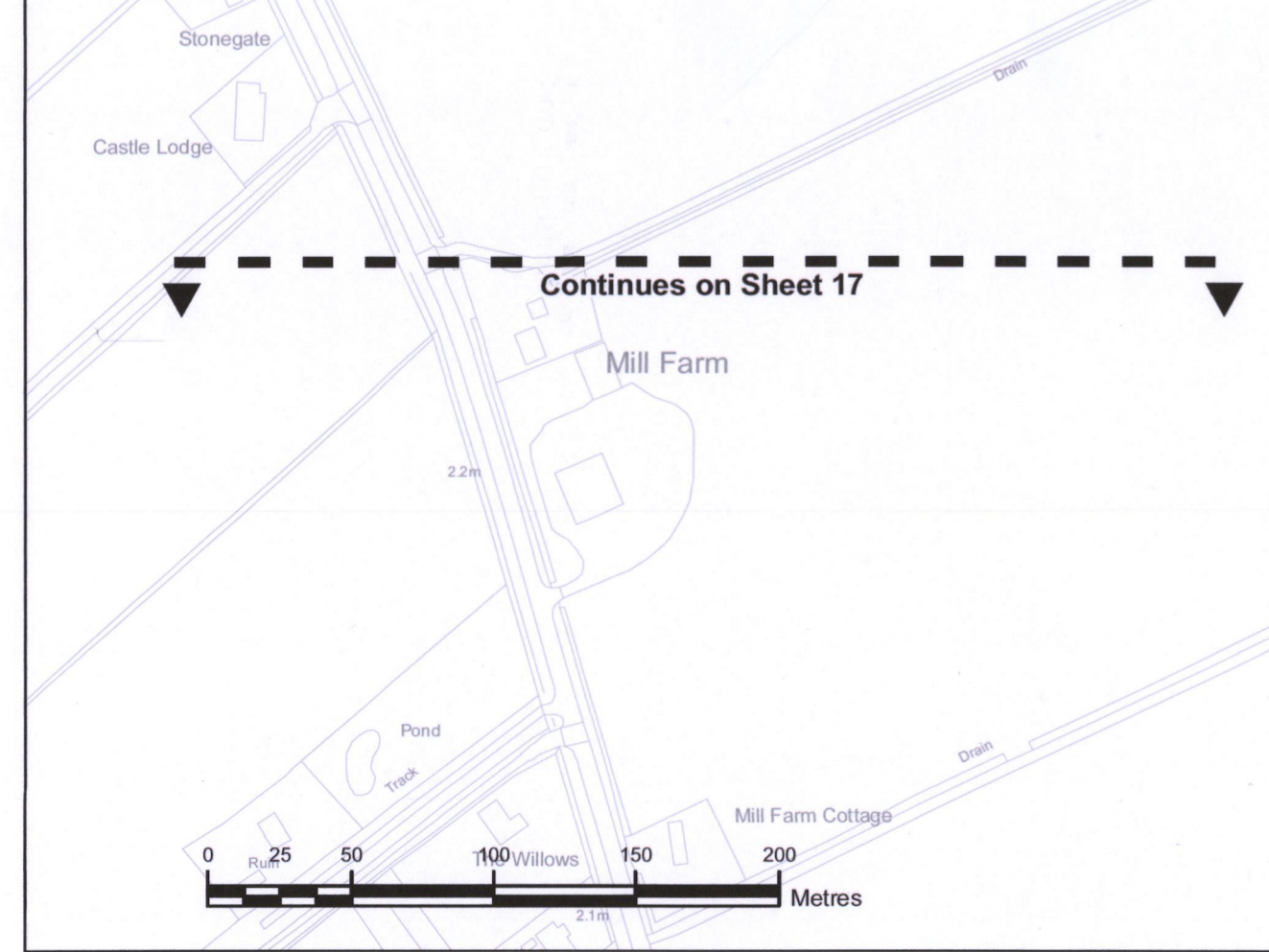
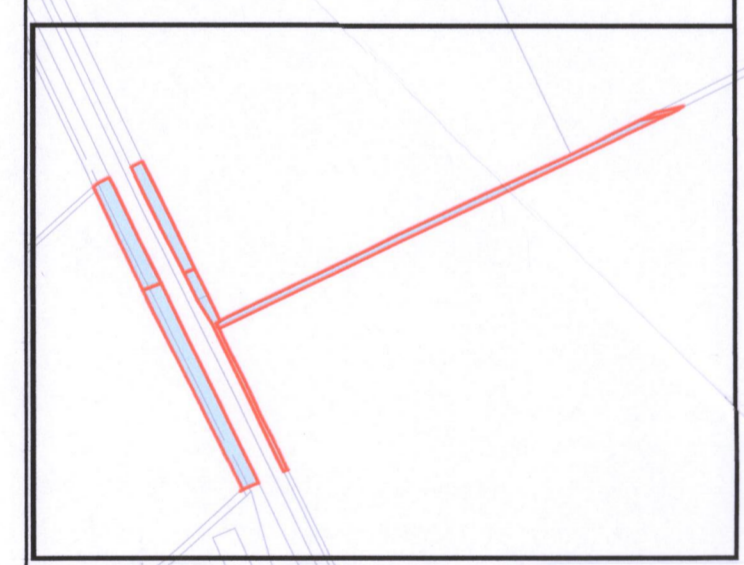
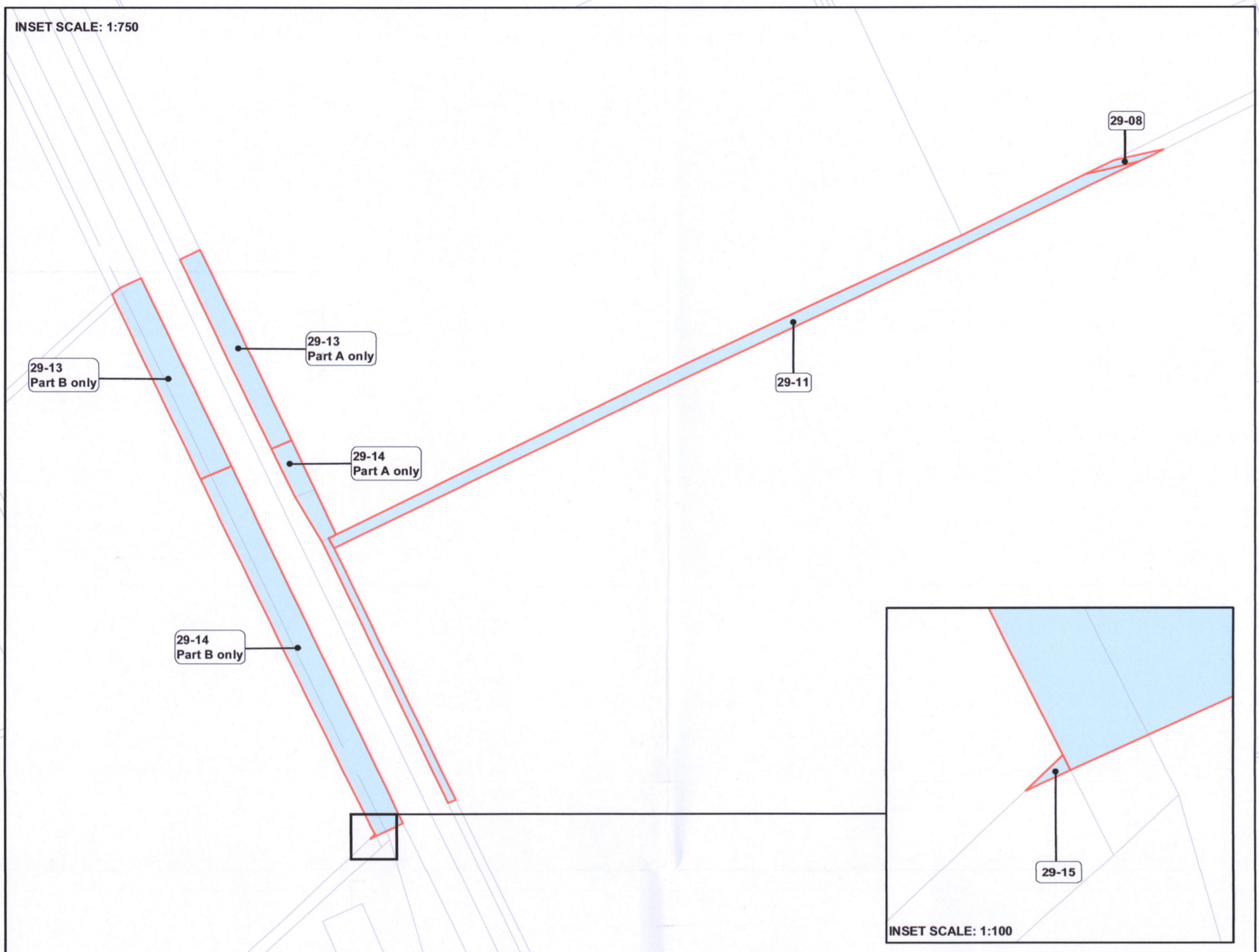


N

PLAN 16 OF 28 REFERRED TO IN THE NATIONAL GRID VIKING LINK LIMITED (VIKING LINK INTERCONNECTOR) COMPULSORY PURCHASE ORDER 2019 GENERAL VESTING DECLARATION NO.2

- Land Included in General Vesting Declaration
- Rights Included in General Vesting Declaration

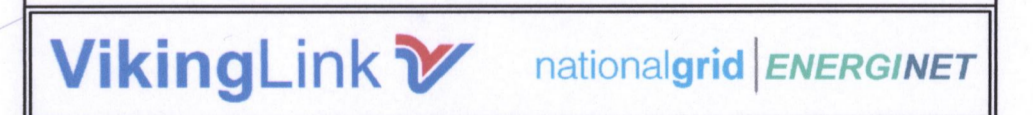


Continues on Sheet 15

Continues on Sheet 17

The common seal of NATIONAL GRID VIKING LINK LIMITED was hereunto affixed on the 20th October 2020 in the presence of:-  
 L. ANNEVE HAGAN  
 Authorised Signatory

Crown copyright and database rights 2016 OS 100031673. You are permitted to use this data solely to enable you to respond to, or interact with, the organisation that provided you with the data. You are not permitted to copy, sub-licence, distribute or sell any of this data to third parties in any form.



**DRAWING TITLE**  
 Plan 16 of 28 referred to in the National Grid Viking Link Limited (Viking Link Interconnector) Compulsory Purchase Order 2019 General Vesting Declaration No.2

SITE		PRINT	
		A1	
DRAWING NUMBER		FORMAT	
		GIS	
REV/REMARKS	AUTHOR/CHKD/APPRD	DATE	ISHT No. of SHTS
A Drawn	BS NF CM	20-10-2020	16 28
			SCALE
			1:2500