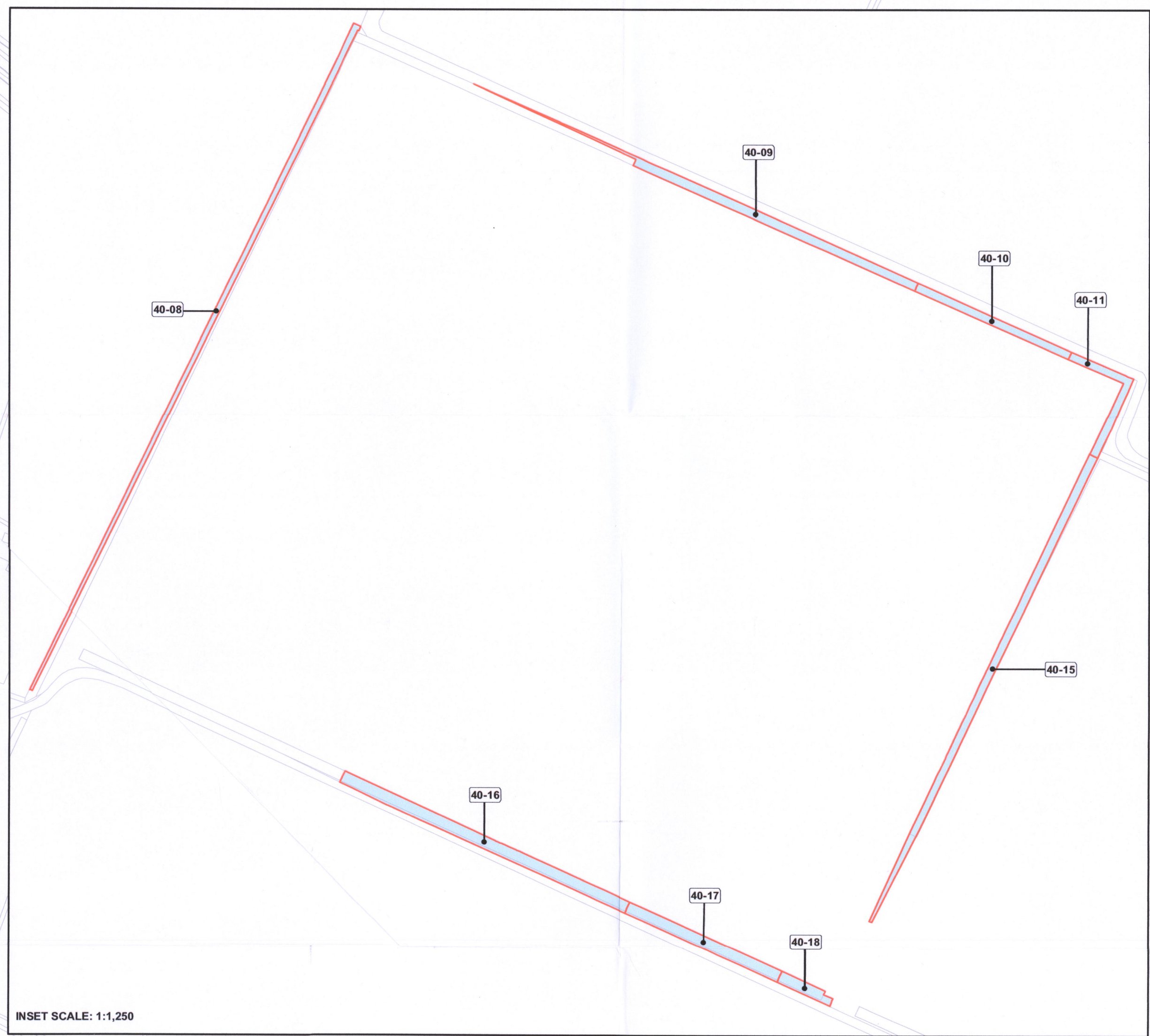


N

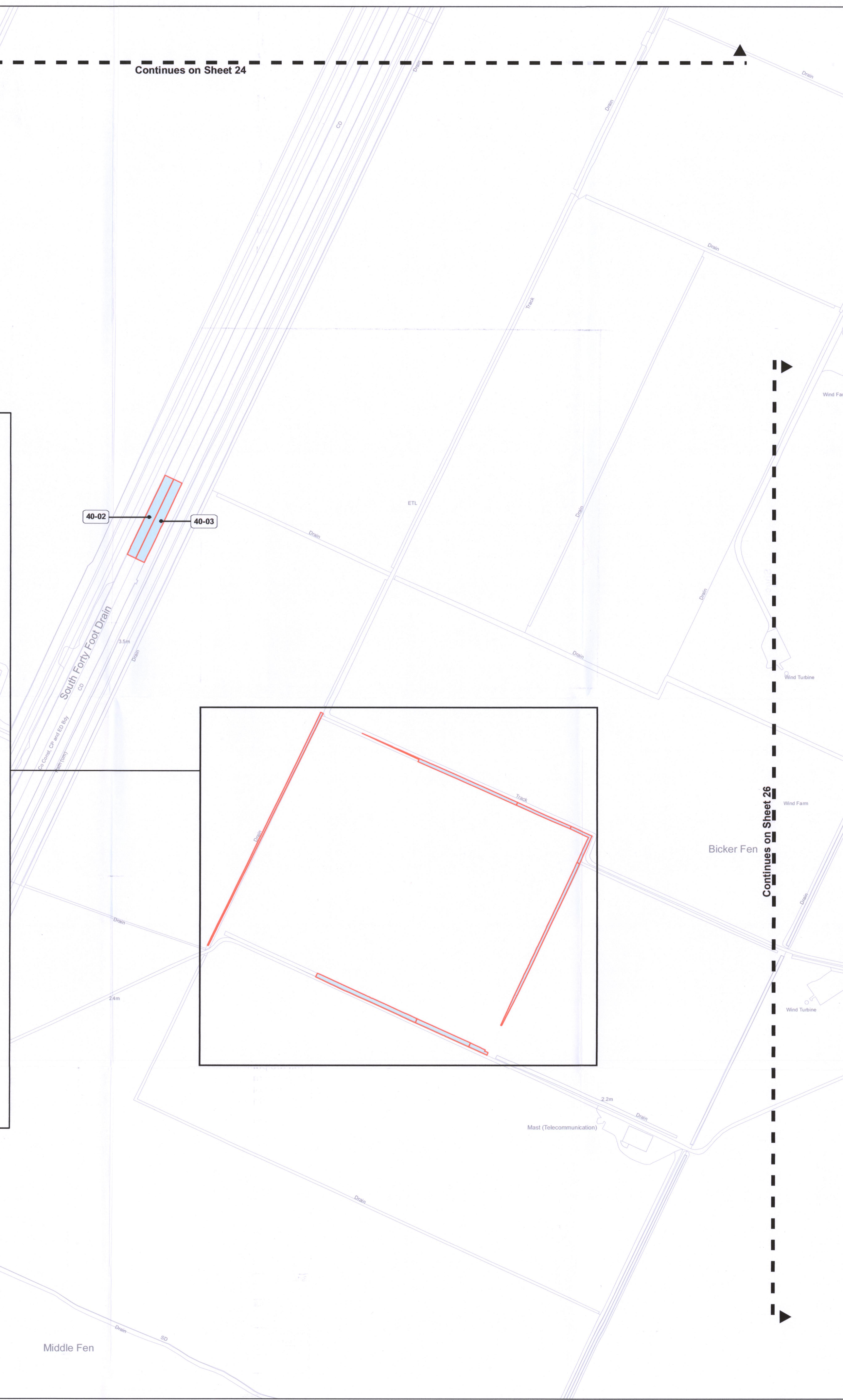
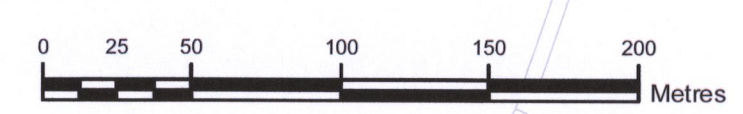
Continues on Sheet 24

PLAN 25 OF 28 REFERRED TO IN THE NATIONAL GRID VIKING LINK LIMITED (VIKING LINK INTERCONNECTOR) COMPULSORY PURCHASE ORDER 2019 GENERAL VESTING DECLARATION NO.2

- Land Included in General Vesting Declaration
- Rights Included in General Vesting Declaration



INSET SCALE: 1:1,250



Continues on Sheet 26

The common seal of NATIONAL GRID VIKING LINK LIMITED was hereunto affixed on the 24th OCTOBER 2020 in the presence of :-  
LAWRENCE HAGAN  
Authorised Signatory

Crown copyright and database rights 2016 OS 100031673. You are permitted to use this data solely to enable you to respond to, or interact with, the organisation that provided you with the data. You are not permitted to copy, sub-licence, distribute or sell any of this data to third parties in any form.



DRAWING TITLE  
Plan 25 of 28 referred to in the National Grid Viking Link Limited (Viking Link Interconnector) Compulsory Purchase Order 2019 General Vesting Declaration No.2

SITE		PRINT A1	
DRAWING NUMBER		FORMAT GIS	
REV	REMARKS	AUTHOR(CHN)/APPD	DATE
A	Draft	BS NF CM	20-10-2020
		SHT No.	No. of SHTS
		25	28
		SCALE 1:2500	
Co-financed by the European Union Connecting Europe Facility			